

MAKES ENERGY
SAVING EASIER



Use your existing energy transmitter and sensors



Instantly see the cost of using energy in your home



View energy use on our web portal or smartphone app



Download your daily, weekly, monthly or average data



Discover and reduce your carbon footprint



Learn about energy with your family



Use the engage hub to reduce your home energy use



MONITOR REDUCE SAVE

efergy

engage

HUB SOLO

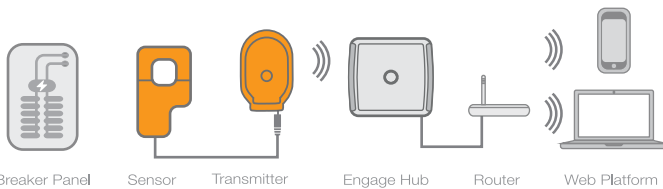
ENERGY DATA GATEWAY



ENGAGE HUBS - HOW THEY WORK

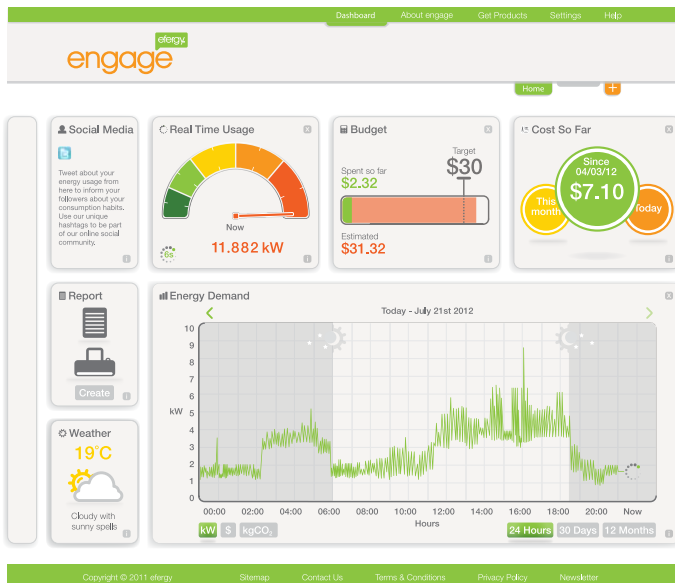
The engage hub solo allows you to use the transmitter and sensor from your existing efergy monitor to receive energy info. Just follow the step by step instructions at engage.efergy.com to access a host of exciting features. The **engage hub** is connected to your internet router via ethernet cable. The web platform and app will then show you how much energy you are using in the same units that are on your bill. You can also see how much energy you are saving compared to other web platform users, compare energy saving tips, and set energy consumption targets.

Items in orange are not included in the Hub Solo kit.



INSTANT ACCESSIBILITY

The **engage hub** updates every minute, providing real time, up to date energy information. **engage hub** enables you to see exactly how much electricity is being used in your home, online through our web portal **engage** or on a downloadable app for your smartphone. This allows you to access your energy data remotely, and at any time. View your energy data in graph, gauge, or numerical form.



EASY TO INSTALL

- Check your existing efergy monitor to make sure your it is receiving data
- This means your transmitter and sensor is fully working
- Plug the engage hub into your router
- Open the web platform on your PC/Mac
- Follow the online instructions to connect to your engage hub
- Use the engage hub + web platform to review your energy usage

TECHNICAL INFORMATION

Model Name	efergy engage hub solo 1.0
Model Number	HH-1.0-AUS
Frequency	433MHz
Transmission Time	60 seconds
Transmission Range	230 - 328ft
XL Sensor Voltage Range	90 - 600V
Measuring Current	50mA - 90A (max)
Testing Standards	CSA - UL - FCC



1 x engage hub
1 x ethernet cable
AC/DC Adaptor

MONITOR REDUCE SAVE